

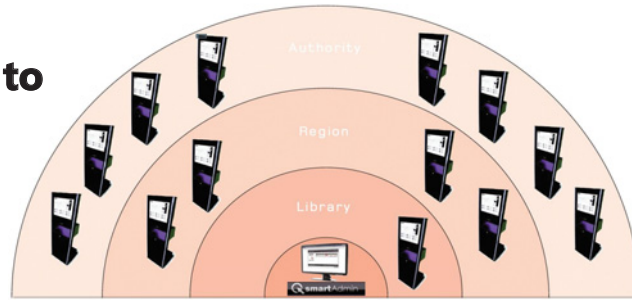
# smartAdmin

To be implemented July 2011



Poster Promenade

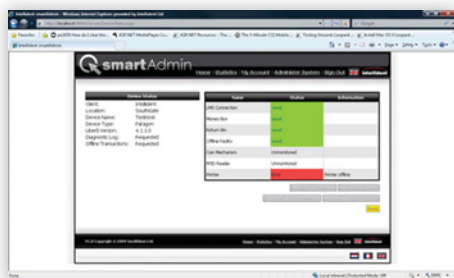
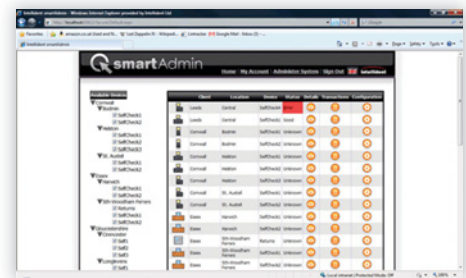
**Software which allows staff to view, monitor and update the status of the self-service units**



## Status monitoring

Provides users with the ability to monitor the status of an individual piece of equipment or multiple machines, within a facility or estate-wide, via a web based interface.

Users are presented with a screen highlighting the status of machines i.e. if the receipt paper is low or return bins require emptying.



## Configuration management

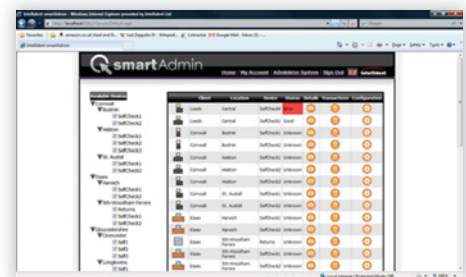
When a piece of equipment is selected, its current settings and status will be highlighted in the information panel, allowing the user to remotely view, update or change the configuration.

The user may view or make amendments to multiple pieces of equipment simultaneously within a single facility or across an entire estate.

## Assign permissions

Administration users have the rights to create user accounts and assign permissions with regards to what a user is allowed to view and their editing entitlements.

Library staff can all be supplied with individual log-in details in order to ensure they monitor machine status regularly.



Self Service Statistics - Items by Hour of the Day Friday 04 Sep 2009 - Friday 04 Sep 2009

Time	Borrowed OK	Borrowed Failed	Returned Items	REX Items	Returned OK	Returned Failed	Returned Total	Account Status	Reservations	Amount Paid Total
00:00	54	0	37	91	16	0	16	4	2	0.00
01:00	18	0	55	73	0	0	0	0	2	0.00
02:00	21	0	0	21	20	0	20	2	4	0.00
03:00	38	0	54	92	17	0	17	3	1	0.00
04:00	9	0	59	59	111	0	111	4	1	0.00
05:00	20	0	71	91	54	0	54	3	0	0.00
06:00	17	0	36	53	0	0	0	1	2	0.00
07:00	35	1	56	92	0	0	0	0	1	0.00
08:00	16	0	59	74	38	0	38	1	1	0.00
09:00	17	0	58	75	20	0	20	2	2	0.00
10:00	16	0	36	52	39	0	39	0	1	0.00
11:00	9	0	37	46	38	0	38	3	0	0.00
12:00	0	0	94	223	17	0	17	4	0	0.00
13:00	40	0	56	96	18	0	18	4	3	0.00
14:00	54	1	98	153	57	0	57	2	2	0.00
15:00	38	0	51	89	37	0	37	3	1	0.00

## Statistics reporting

smartAdmin enables staff to monitor the amount of transactions that occur on each individual machine and break them down into categories of the library's choosing.

For instance, the amount of issues, returns and renewals.

